



PRIVACY AND SECURITY SUMMARY

PRIVACY

F-Response leverages several design decisions to greatly reduce or eliminate the potential for compromising data privacy, including:

AES 256-BIT ENCRYPTION

F-Response includes industry standard and regulation compliant AES 256-bit encryption for connections.

NO OVERT STORAGE

F-Response does not store any data but simply facilitates the read only connection to remote systems and resources.

ADMINISTRATOR RIGHTS

F-Response requires administrator level privileges to deploy to remote system resources which can be managed with Active Directory policy.

PASSWORD CONNECTION

F-Response requires a password for accessing the write-protected port on the remote subject computer.

MANAGED LICENSING

F-Response requires a physical licensing dongle to start a license manager on your local network. The subject software cannot be started without access to the license manager.

LOCAL NETWORK PROTECTION

F-Response is designed to run on your local network and therefore benefits from the current security policies and protections in place in your environment.



SECURITY

F-Response connections are designed to maximize the confidentiality, integrity and availability of your service, including:

CRYPTOGRAPHY

F-Response leverages the US Government cryptography standard, Advanced Encryption Standard (AES)¹ utilizing a 256-bit cryptographic key length.

The read-only connection to remote systems are encrypted using AES256. F-Response encryption is seamless and native in all version of F-Response.

Furthermore, F-Response uses Diffie-Hellman² key exchange and SHA256 hash based message authentication code³ verification to exchange symmetric session keys for individual data connections.

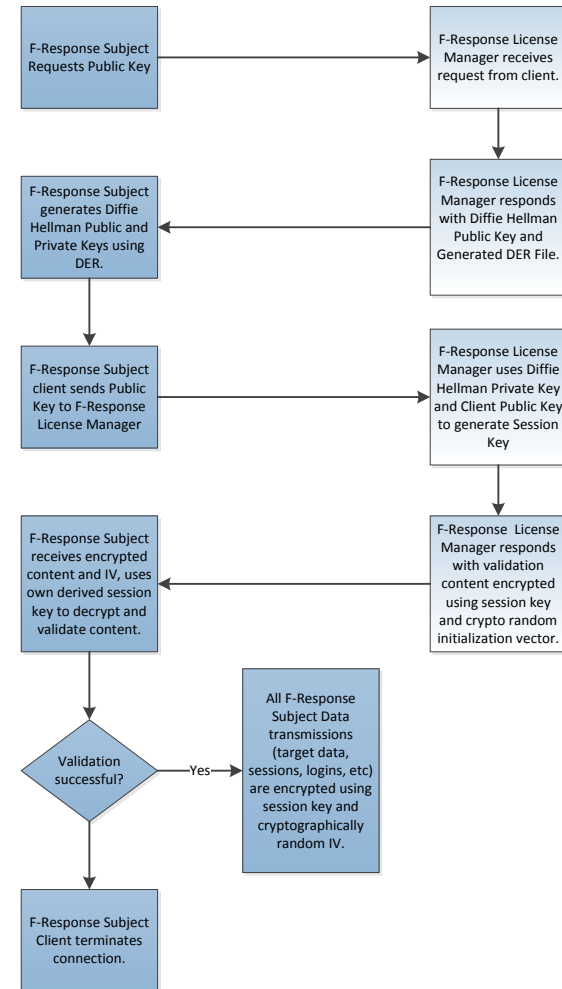
All AES operations require an Initialization Vector (IV) to properly randomize the initial block of un-encrypted data. In all cases, F-Response Instances leverage existing cryptographic software libraries to provide a suitable random data source. A brief overview of the key exchange and cryptography model is provided in the included figure.

MANAGED INSTALLATIONS

F-Response can be deployed from the management console, or a MSI can be created and distributed using your in-house software management solution. The client software can be pre-installed and activated when needed or deployed and started when necessary.

SIMPLE SERVICE

F-Response functions as a simple single executable on the remote subject computer and requires no additional libraries or installation components.



¹ <http://csrc.nist.gov/publications/fips/fips197/fips-197.pdf>

² <http://tools.ietf.org/html/rfc2631>

³ http://csrc.nist.gov/publications/fips/fips198-1/fips198-1_final.pdf