

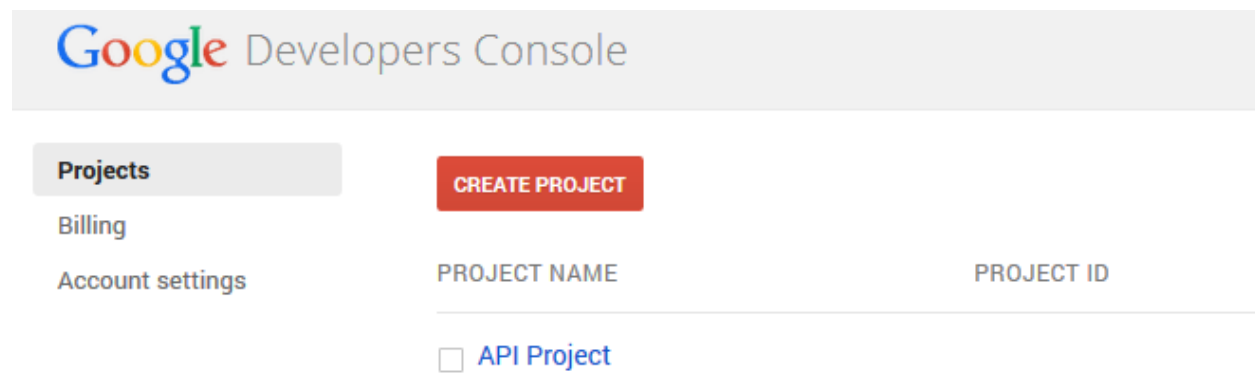
Your Mission: Use F-Response Cloud Connector to access Google Apps for Business Drive Cloud Storage

*Note: This guide assumes you have installed F-Response Consultant, Consultant + Covert, or Enterprise, your F-Response licensing dongle is plugged into your analyst machine, and the F-Response Cloud Connector (FCLDC) has been started. For more information, please reference the F-Response User Manual. **Note this is a Premium Service and only available for F-Response Consultant Edition and above. ***

Step 1: Configure a Domain Wide Delegation account for the Google Apps for Business Domain

Before you can access Google Apps for Business Individual Google Drive accounts you must use the Google Developers Console to configure a Domain Wide Delegation account. The Developers Console is the latest refresh of what was the Google APIs console. This new console is located at:

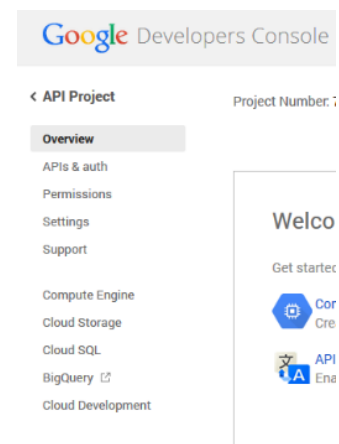
Cloud Console -> <https://console.developers.google.com>



Open a web browser and access the Google Cloud Console, you will need to login as the Administrative user of the Apps domain when prompted.

The first step is to create a project.

You can leave all the defaults for the project during creation. Next you will need to click on your newly created project to access the API Project menu.



First you will need to select the APIs & auth menu option and create a new app. Just as before the name of the app is unimportant and all defaults can be accepted. Next you'll need to select the Credentials

OAuth

OAuth 2.0 allows users to share specific data with you (for example, contact lists) while keeping their usernames, passwords, and other information private.

[Learn more](#)

CREATE NEW CLIENT ID

Create Client ID

APPLICATION TYPE

☐

Web application

Accessed by web browsers over a network.

☒

Service account

Calls Google APIs on behalf of your application instead of an end-user.

[Learn more](#)

☐

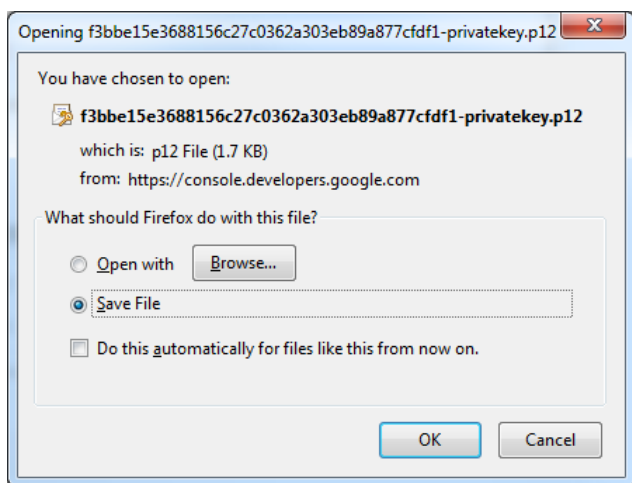
Installed application

Runs on a desktop computer or handheld device (like Android or iPhone).

Create Client ID

Cancel

option to generate a new Service Account. Select "Create New Client ID" and then in the following pop-up select "Service Account" and "Create Client ID". This will pop up a download for the newly generated p12 encryption key file. Save this file as it will be needed later.



Following the encryption key download you should see a newly created Service Account looking something like this:

Service Account

Client ID	733107590776-	.apps.googleusercontent.com
Email address	733107590776-	e6mb@developer.gserviceaccount.com
Public key fingerprints	f3bbe	

Generate new key

Download JSON

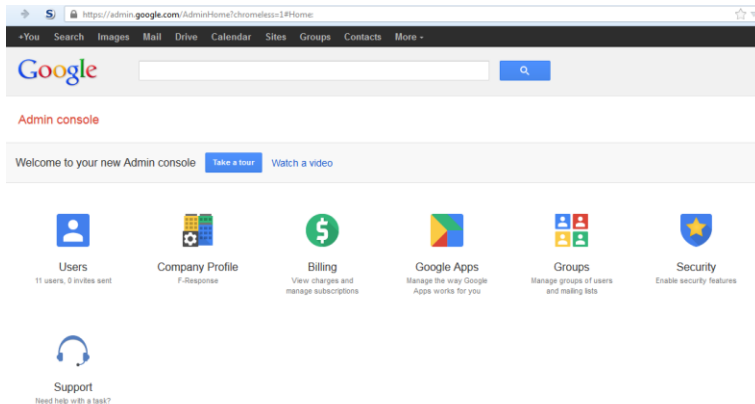
Delete

After the account has been created you will need to select the APIs option from the left hand menu and enable Drive API access.

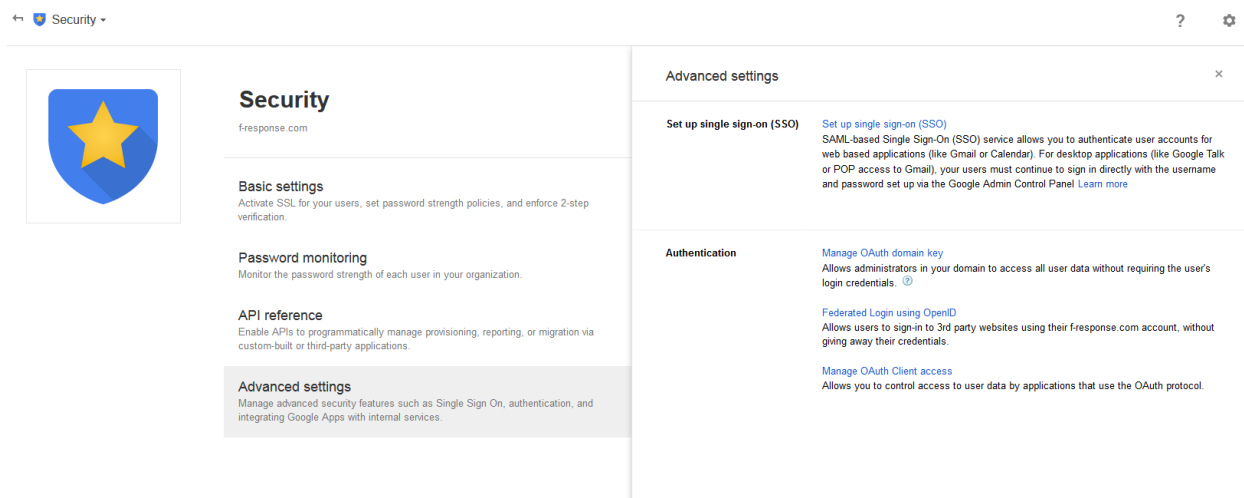


After the Drive API has been enabled you must open the Google Apps for Business Domain Administrator Console.

Admin Console -> <https://admin.google.com/>



The Admin console provides options for administering the Google Apps for Business Domain. The option you will want to select is “Security”.



Under Security you will need to press “Advanced Settings” and click on the “Manage OAuth Client Access” in the right hand panel.

Manage OAuth Client access

Allows you to control access to user data by applications that use the OAuth protocol.

Manage API client access

Developers can register their web applications and other API clients with Google to enable access to data in Google services like Calendar. You can a

Authorized API clients

The following API client domains are registered with Google and authorize

Client Name	One or More API Scopes
<input type="text"/>	<input type="text"/>
Example: www.example.com	Example: http://www.google.com/calendar/feeds/ (comma-delimited)
	<input type="button" value="Authorize"/>

Under Manage API Access you will want to paste in the Client ID (as Client Name) included in the JSON output that was downloaded earlier, and the following API Scope.

API Scope -> https://www.googleapis.com/auth/drive.readonly

Press Authorize to complete the delegated account permissions.

Step 2: Open Google Apps for Business Drive Credential Configuration window

Before you can connect to Google using the new delegation account you must first input valid credentials.

In the **F-Response Cloud Storage Connector** go to **File->Configure Credentials-> Google Apps for Business Credentials**.



Cloud Storage Connector

Step 3: Input account information and validate the credentials

Service account

Use service accounts to call Google APIs on behalf of your application instead of an end-user. [Learn more](#)

Client ID:	[REDACTED]	.apps.googleusercontent.com
Email address:	[REDACTED]	@developer.gserviceaccount.com
Public key fingerprints:	[REDACTED]	8b56b264 - Delete...

Sample Google Apps Console Service Account Details

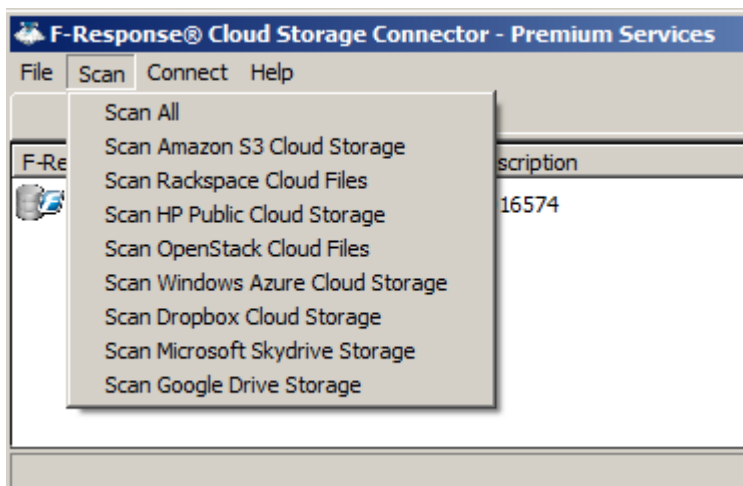
In order to complete the credentials dialog you will need the following information:

- The delegation Service Account email address as provided by the Google Apps Console.
- The Public Key file as provided by the Google Apps Console.
- The target end user's email address.

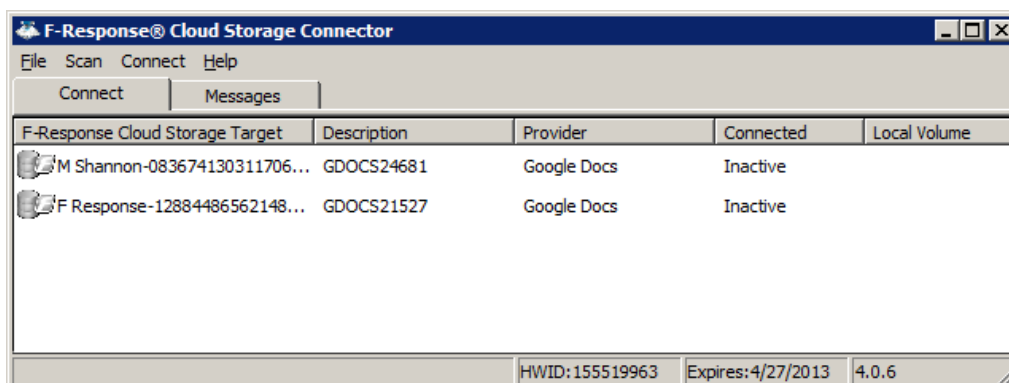
Provided everything is accurate you can add the credential to your encrypted credential store, save, and move on to connecting to the Google Drive account.

Step 4: Scan and enumerate Google Drive Accounts

Use the Scan menu to enumerate Google Drive Cloud Storage Containers.



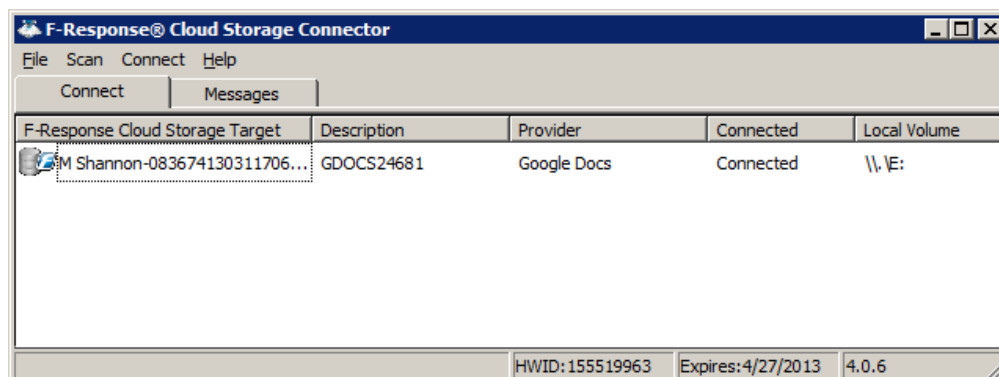
Cloud Connector Scan menu



Cloud Connector scan results

Step 5: Login and mount one or more Google Drive Accounts

You can connect to a storage target by selecting the target, right clicking to open the context menu, and selecting **"Login to F-Response Cloud Storage Volume"**. The newly attached volume will be assigned a drive letter and is now accessible read-only for evidence acquisition.



Logged in Cloud Storage target assigned the E:\ drive letter

Step 6: Fire up the tool of your choice!

F-Response is a vendor neutral product. Once F-Response presents the remote cloud storage target as a write blocked local network share, we step out of your way so that you can select the right tool to get your job done. At this point, you can reach into your toolbox and apply the tool of your choice to the newly attached network share.