

# Your Mission: Use F-Response to collect Google Drive account data



*Using F-Response to connect to Google Drive and collect its contents*

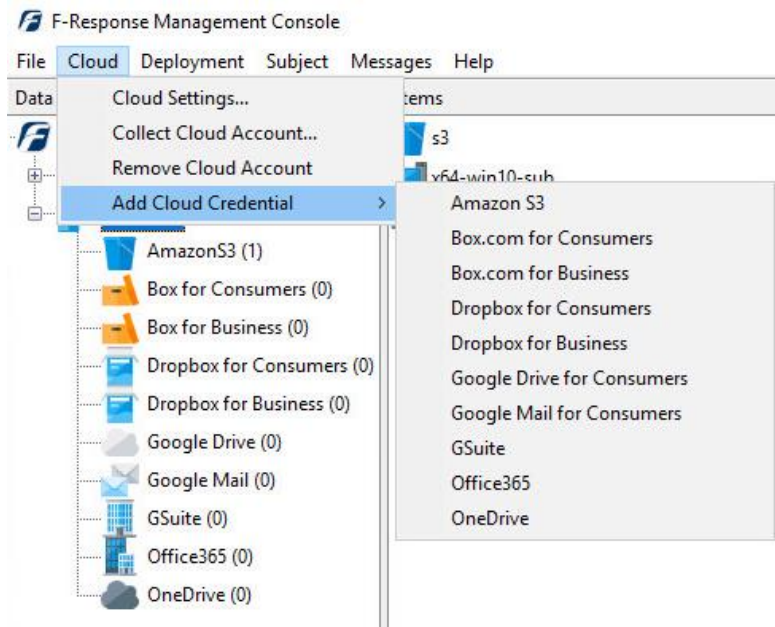
**Important Note**

*Disclaimer: F-Response provides access to 3rd party data sources via Application Programming Interfaces (APIs) and internal structures presented by the provider. 3rd party provided data sources by their very nature are volatile. The afore mentioned F-Response products provide "best effort" for accessing and interacting with those 3rd party data sources however service disruptions, API changes, provider errors, network errors, as well as other communications issues may result in errors or incomplete data access. F-Response always recommends secondary validation of any 3rd party data collection.*

F-Response Cloud Collector Options Supported		
<b>Revision History</b>	Not supported.	Google Drive provides revision history, but it is not supported at this time. Enabling Revision History in F-Response will have no effect on the collection.
<b>Hash Verification</b>	Available and supported.	Google Drive provides md5 hashes of items which will be automatically checked in F-Response if Verify Hashes is enabled.
<b>Rerun Collection</b>	Available and supported.	F-Response can retry to collect specific items that have errored out. This option is only available when collecting to a local directory

## Step 1: Open the Google Drive Credential Configuration Window

Open the F-Response Management Console and navigate to Cloud->Add Cloud Credential->Google Drive for Consumers or double click on the appropriate icon in the Data Sources pane.

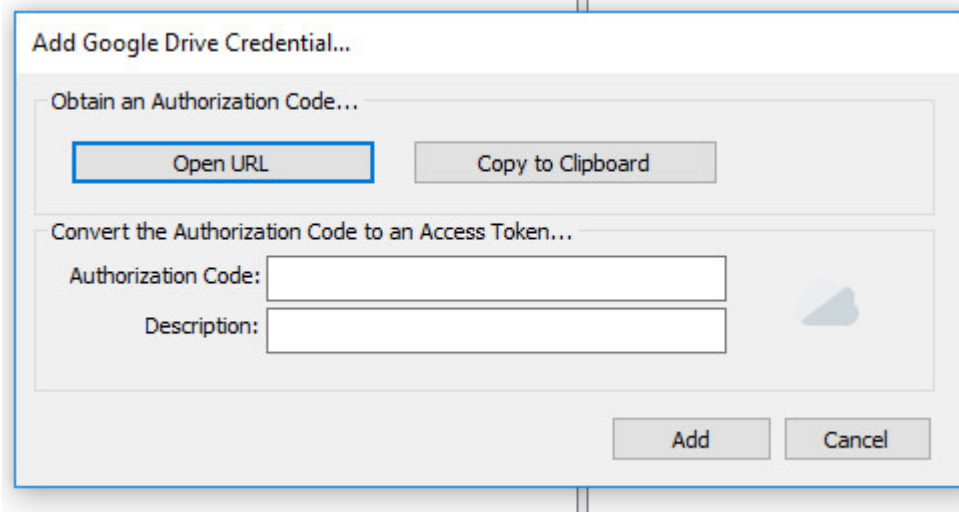


*F-Response Management Console*

## Step 2: Open URL or Copy to Clipboard

---

The first step in obtaining access to the Google Drive account is to request access either via the browser directly or, if you do not have access to the account in question, copying the request URL to the clipboard to be shared with the account holder via email, IM, etc.

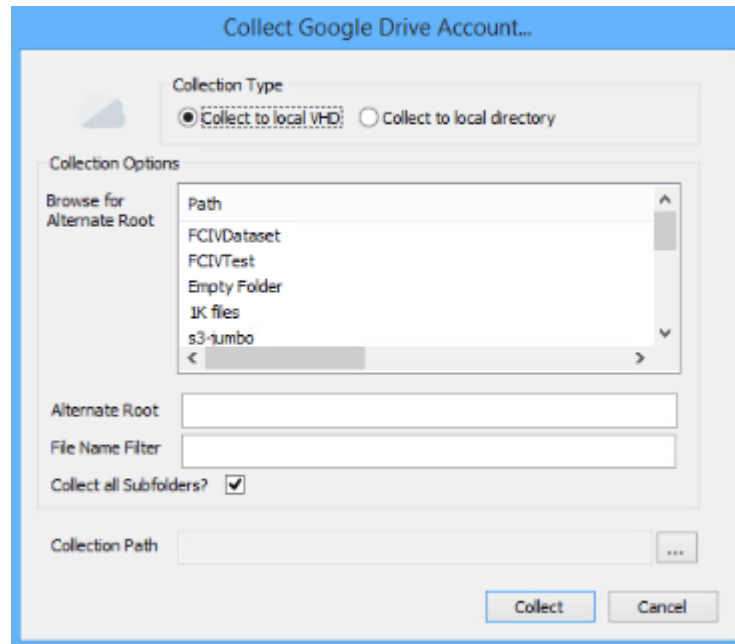


*Credentials Dialog*

Regardless of the method chosen, the web browser user will be asked to login to Google Drive and authorize the F-Response Connector. Upon completion they will be redirected to the F-Response website where an Authorization code will be presented. This is the Google Drive Authorization Code, that code and a Description must be inputted into the credentials dialog window. Press Add Credential to verify and add this credential.

## Step 3: Start a collection

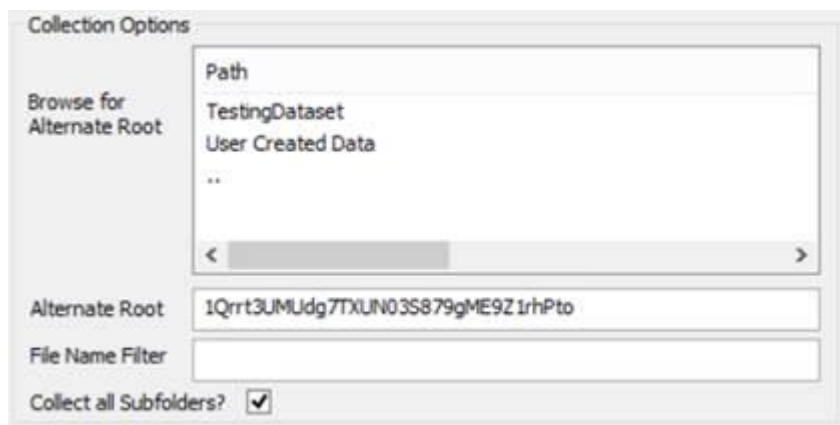
Select the Google Drive icon under Data Sources and then double click on the newly added Google Drive account under Items. This will prepare a new dialog for collecting the account's contents.



*Starting a new collection*

To collect all the Google Drive data simply select the **Collection Type**, ignore the **Collection Options**, choose a location to store the information in the **Collection Path** and click **Collect**.

F-Response now has the option to target specific data in Google Drive. Some or all of the **Collection Options** can be invoked to reduce the size of the data set to be collected. The options are as follows:



**Browse for Alternate Root:** This option will allow you to select a different starting location to pull data from. Click on an item and wait a moment for the subdirectories to parse. Continue to click and

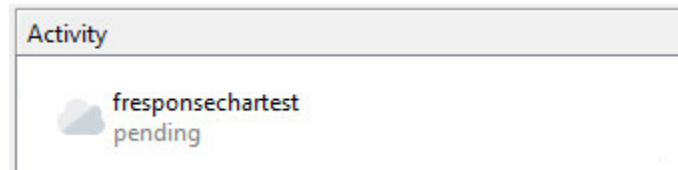
drill as far down the path as you need to narrow the scope of the collection accordingly (the 'double dot' option will take you back). The **Alternate Root** field below will populate with the correct information.

**File Name Filter:** Will check the string entered here against files as presented by the provider. There is no need to enter wildcards (\*.\*) and it does not use regular expressions. For example, to collect only Excel files in the account, just type **.xls** in the box.

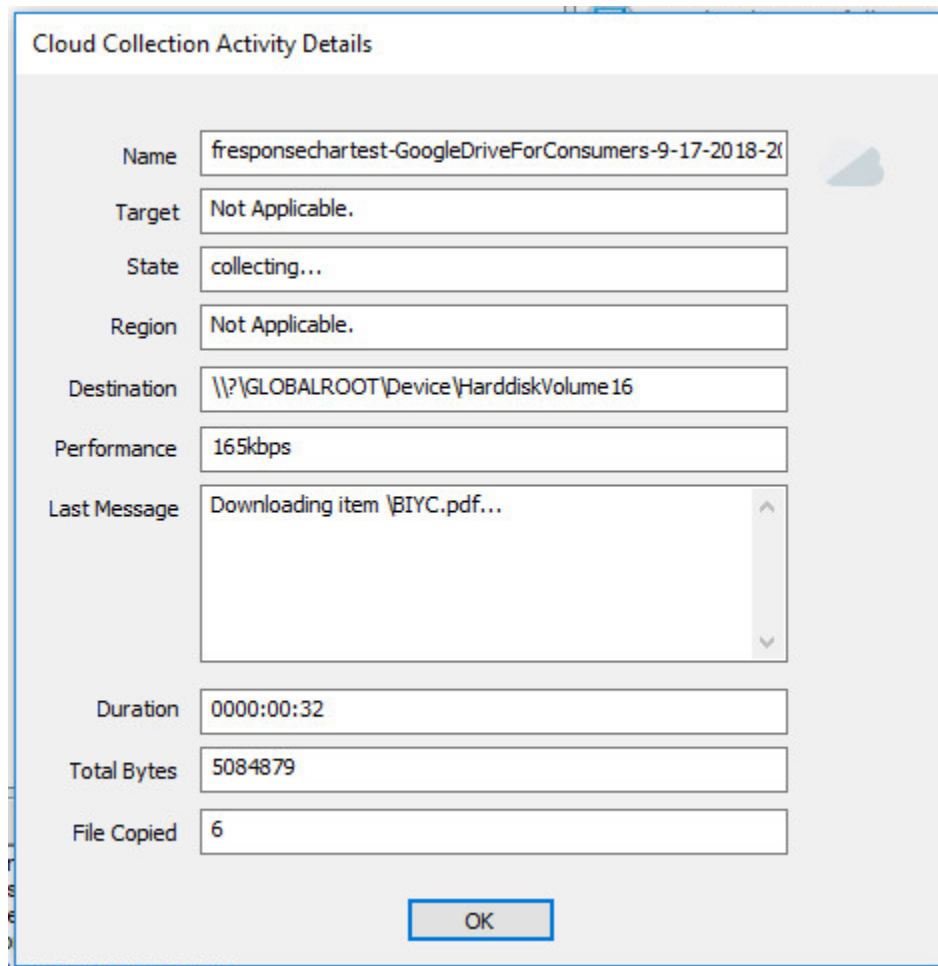
**Collect all Subfolders?** If checked, it will collect the content of all subfolders, if unchecked, it will only collect that folder's file contents.

## Step 4: Check the Activity Pane

The Activity Pane shows the active collection. Double clicking on the collection will provide additional details.



*Attached Volume*



*Collection Details*

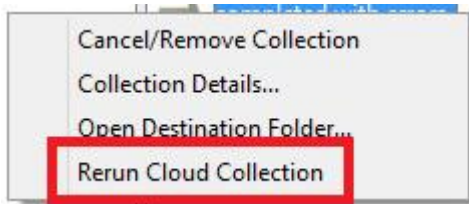
## Step 5: Review the completed collection

Navigate to the destination folder at the completion of the collection to review the individual files collected, or the summary VHD, along with any log or error reports.

Name	Date modified	Type	Size
fresponsechartest-GoogleDriveForConsu...	9/17/2018 5:49 PM	Hard Disk Image F	646,420 KB
fresponsechartest-GoogleDriveForConsu...	9/17/2018 5:48 PM	CSV File	811 KB
fresponsechartest-GoogleDriveForConsu...	9/17/2018 4:47 PM	CSV File	1 KB

*Reviewing the completed collection*

## Rerunning a collection



If your cloud collection completes with errors, F-Response can be used to rerun the collection and target only those files/folders it was unable to collect. This operation can be performed multiple times until a collection completes successfully. Not all providers offer rerunning options, and not all errors can be reattempted. To rerun a cloud

collection, right click on the completed collection in the Activity column and choose **Rerun Cloud Collection**.

**\*Note:** Rerunning a collection is only available when collecting to a local directory, this not an option when collecting in VHD format.

## Additional Details

The following file datetime values (i.e., "metadata") are used by F-Response during the collection (Any missing dates are set to 1601-01-01T00:00:01Z):

WINDOWS TIME	PROVIDER VALUE
<b>MODIFIED</b>	modifiedTime
<b>ACCESSED</b>	viewedByMeTime
<b>CREATED</b>	createdTime

